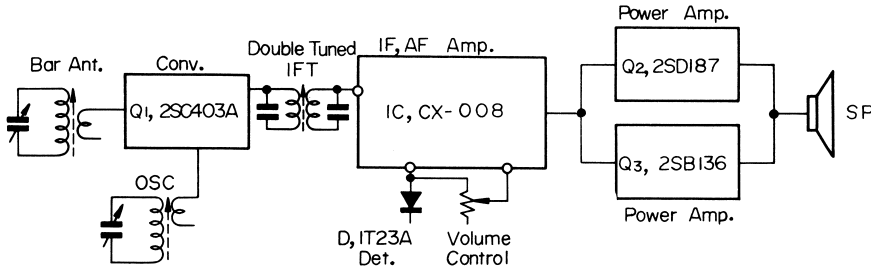


S33-1 Sony ICR-200/BC-200W, E

Block Diagram

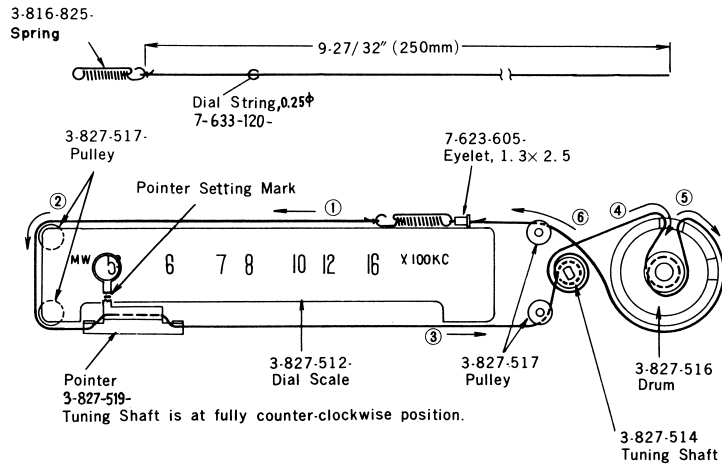


Frequency Coverage and Tracking Adjustment

Adj. Item	SSG (Standard Signal Generator) Coupling	SSG Freq.	Receiver Dial Setting	Connect VTVM	Adjust	Remarks
Frequency Coverage	Loop Antenna	520 Kc (1,000 c/s 30% AM)	Fully Left	To Earphone Jack with 8Ω load resistor in parallel	OSC Coil (OSC)	Adjust for maximum meter reading. Volume: Max. Power Source: DC 3.66V
		1,680 Kc (")	Fully Right		OSC Trimmer (C ₁)	
Tracking	—ditto—	620 Kc (")	Tune to 620 Kc signal	—ditto—	ANT Coil (ANT)	—ditto—
		1,400 Kc (")	Tune to 1,400Kc signal		ANT Trimmer (C ₂)	

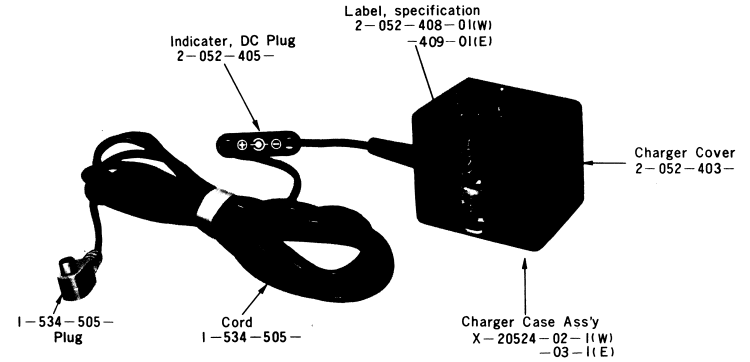
BC-200W, BC-200E

Dial Cord Stringing

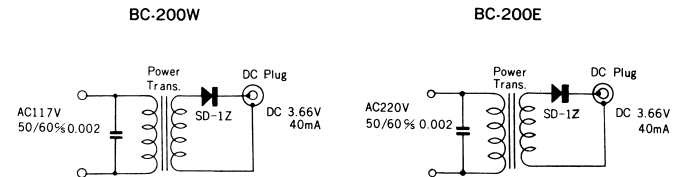


Pointer Setting

Turn the Tuning Shaft counter-clockwise to the full. And set the Pointer to Pointer Setting Mark on dial scale.

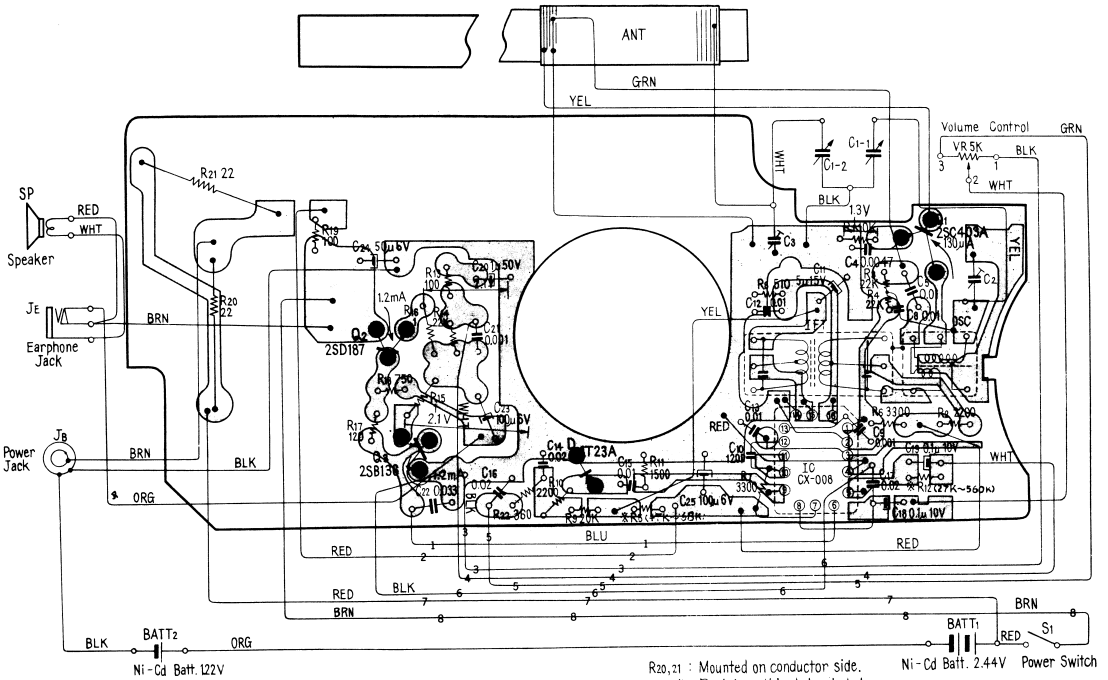


Schematic Diagram



Mounting Diagram

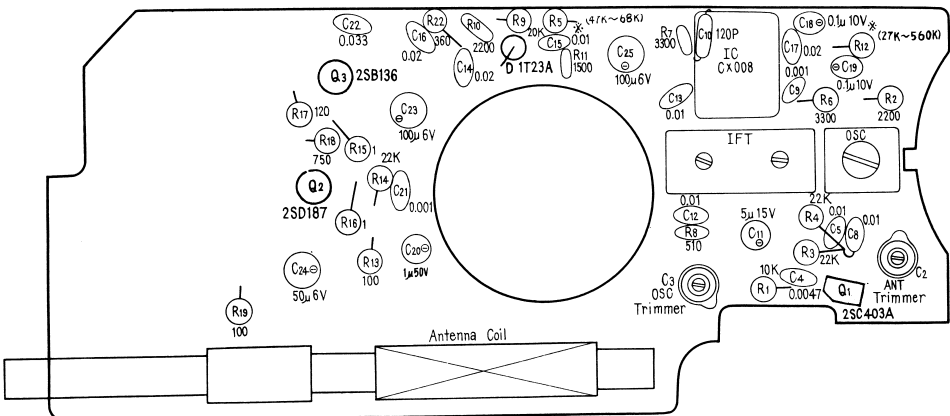
—Conductor Side—



R20,21 : Mounted on conductor side. Ni - Cd Batt. 2.44V Power Switch
 X : Resistance Value to be selected.

Mounting Diagram

—Component Side—



* Resistance Value To be selected.

